

Linc-Ed is our new reporting system.

Our aim is to implement a robust system that allows teachers, parents and students to access learning in an online environment that is secure, easy, and effective.

LINC-ED allows teachers and students to share learning anytime, anywhere and this can viewed on any device. The sharing of learning is designed to build year on year so that over time you will have access to comments, assessments, images, video and helpful resources all in one place.

We have chosen to use progression reporting so parents and students will be able to see progress over time.

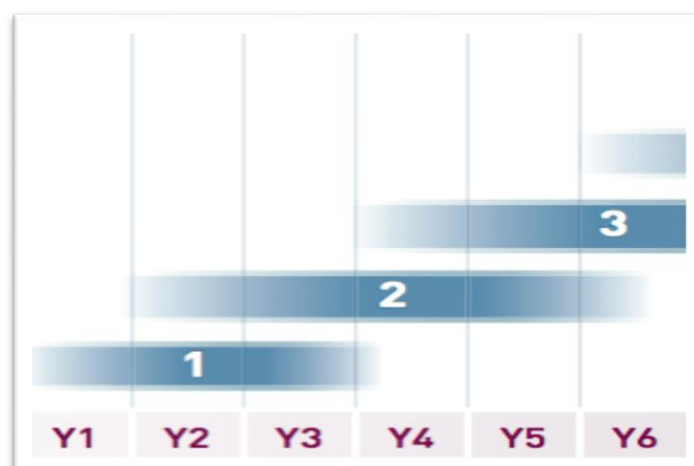
Teachers will update the progressions and write posts about Reading, Writing and Maths throughout the year.

Curriculum Levels

Teachers assess your child's achievement across many learning experiences and collect data throughout the year to support this evidence. All this contributes to the OTJ (overall teacher judgement) against the progressions.

The curriculum levels are shown in the diagram below and give an indication of what level your child will be working within at the different year levels. These levels are a guide only as it is important to remember that every child moves at their own pace and they have periods when they move fast with their learning and other times when they slow down and need time to consolidate before moving on to the next level.

Year and Curriculum Levels



Reading

The reading progressions align with the colour wheel books, the reading age and the reading skills children need at each level.

Writing

The writing progressions are checked off as your child has shown they can use each writing feature independently 80% of the time when they are writing.

Maths

The maths progressions are checked off as your child shows evidence of having achieved each goal.